

FITC Anti-Human CD25 (7G7B6) Monoclonal Antibody



天津三箭生物技术股份有限公司
Tianjin Sungene Biotech Co., Ltd.
精准 高效 稳定 Precision Efficient Stable

Catalog Number	Vial Size
H10253-02G	25 tests
H10253-02H	100 tests

Market | 400-621-0003
marketing@sungenebiotech.com

Support | 022-66211636-8024
techsupport@sungenebiotech.com

Web | www.sungenebiotech.com

Important Note: Centrifuge before opening to ensure complete recovery of vial contents.
This product is guaranteed up to one year from purchase.

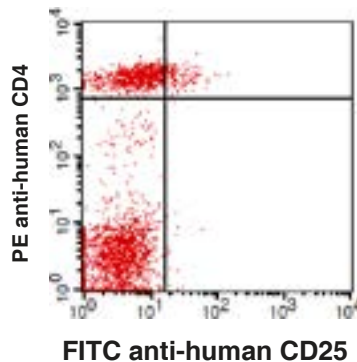
Purified Antibody Characterization

Clone	Isotype	Reactivity
7G7B6	Mouse IgG2a	Human

Description

CD25 is a 55 kD type I transmembrane glycoprotein also known as the low affinity IL-2 receptor α chain or Tac. It is expressed on progenitor lymphocytes, activated T and B cells, and activated monocytes/ macrophages. CD25 is also expressed on a subset of non-stimulated CD4⁺ T cells termed T regulatory cells. CD25 associates with the IL-2 receptor β (CD122) and common γ chains (CD132) to form the high affinity IL-2R complex.

Illustration of Immunofluorescent Staining



Human peripheral blood lymphocytes stained with FITC anti-human CD25 and PE-CY5 anti-human CD4

Product Information

Conjugation: FITC

Formulation: PBS pH 7.2, 0.09% NaN₃, 0.2% BSA

Storage: Keep as concentrated solution. Store at 4°C and protected from prolonged exposure to light. **Do not freeze.**

Application: Recommended Application: FC

Usage: Each lot of this antibody is quality control tested by immunofluorescent staining with flow cytometric analysis (The amount of the reagent is suggested to be used from 20 μ L to 5 μ L per 100 μ L of peripheral blood. Please check your vial). Since applications vary, the appropriate dilutions must be determined for individual use.

References

- [1] Taniguchi T, et al. 1993. Cell 73:5.
- [2] Waldmann TA. 1991. J. Biol. Chem. 266:2681.
- [3] Read S, et al. 2000. J. Exp. Med. 192:295.

For Research Use Only.